

Myths and Reality of ARCHIBUS/FM

Documenting and Mapping Enterprises Optimize the Management of Your Organization's



The #1 Solution for Total Infrastructure and Facilities Management in the World

While there are numerous commercially available CAFM/CIFM solutions, ARCHIBUS/FM is the undisputed leader in CAD and database integration technology, application functionality, and ease of use. ARCHIBUS Inc., with about 66% of the integrated CAFM market, is the recognized leader within the FM community.

The ARCHIBUS/FM solution delivers value to over 100,000 users managing over 1.4 million buildings and 16 billion square feet of space worldwide. Implementation of ARCHIBUS/FM ensures maximum ROI at minimal risk to the organization.

Facility management (FM) automation can be justified using both quantifiable and non-quantifiable benefits.

Some benefits include:

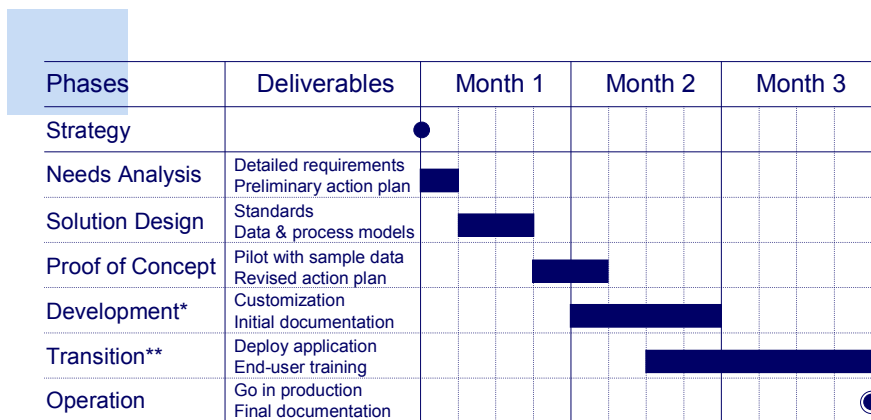
- 1) Operational cost savings
- 2) Reduction of unnecessary personnel moves
- 3) Enhanced access to mission-critical information
- 4) Improved utilization of furniture and equipment assets
- 5) Increased productivity and better customer service
- 6) Reduced facility management labour expense

As a first step to quantify the benefits of FM automation, ARCHIBUS Inc. can provide a complimentary, customized cost savings analysis. Based on these preliminary results,

Realization of the benefits of a CAFM/CIFM system requires an educational process for all levels of management. Our staff and Business Partners can help you champion the benefits of CAFM/CIFM to others within your organization. As the pioneer in automated FM, ARCHIBUS Inc. can provide relevant, industry - specific case studies demonstrating increases in organizational productivity and decreases in operating cost.

In addition, an ARCHIBUS representative can conduct an “Opportunity Audit,” which is a customized analysis and report specifying your organization’s FM needs. The findings may help educate and convert your organization’s top decision-makers on the benefits of CAFM/CIFM implementation.

The plan



* The length of the development phase depends on the customization's scope.
 ** The length of the transition phase depends on the amount of data and field work

The #1 Solution for Total Infrastructure and Facilities Management in the World

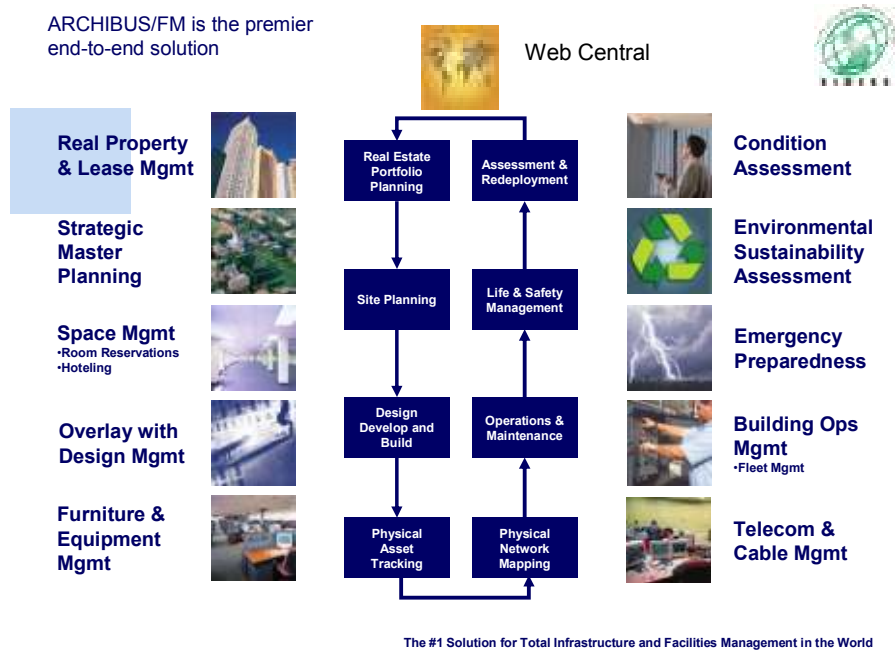
While facility size may be a rough indicator of return-on-investment for a CAFM/CIFM solution, it is no longer the primary criterion for implementation.

Factors such as charge back for space, personnel churn rates, asset utilization and cost reduction goals are more important criteria for implementing a CAFM/CIFM system than facility size.

Nevertheless, ARCHIBUS Inc. offers the Facil-o-tor an entry level, which are low cost CAFM/CIFM solutions ideal for facilities under 500,000 and 100,000 square feet, respectively, and/or for organizations which are just beginning to automate FM functions.

An organization does not necessarily have to be directly regulated to accrue benefits in managing liability or risk. For example, all organizations adopting standards under the Americans with Disabilities Act will find reports generated using a CAFM/CIFM system extremely beneficial.

A CAFM/CIFM system could also greatly assist risk management and compliance reporting in the areas of health/safety practices, hazard abatement programs, disaster containment, code enforcement, and space accounting requirements.



ARCHIBUS/FM has an open architecture with discrete applications that can be purchased separately to complement any existing programs. The applications include:

Application Modules:

- 1) Real Property & Lease Management
- 2) Strategic Master Planning
- 3) Executive Information system
- 4) Space Management
- 5) Overlay for AutoCAD® with Design Management
- 6) Furniture & Equipment Management
- 7) Telecom & Cable Management
- 8) Building Operations Management
- 9) Condition Assessment
- 10) Environmental sustainability assessment
- 11) Emergencies preparedness
- 12) Fleet management

Activities/Wizards/Automation Solutions:

Complete web based solution utilising the latest J2EE Web Technology

- 1) Room Reservations
- 2) Hoteling
- 3) Work Order Wizard
- 4) Workflow Controller series
- 5) Asset tracking Automation with PDA application.

ARCHIBUS Inc. and our Business Partners can work with you by filling voids in your FM capabilities and increasing your functionality. Supplementing versus replacing existing systems and processes may, in some cases, achieve the best solution for your organization.

Since 1982, ARCHIBUS/FM remains the world's most comprehensive, yet flexible FM automation solution. It uses client/server technology for fast, efficient data processing. It supports native MS SQL Server, Oracle, Sybase and Open Database Connectivity (ODBC) for easy data exchange.

Our flagship product, ARCHIBUS/FM Enterprise Edition, includes independent drawing tools, step-by-step Best Practices and over 10,000 user-defined reports, giving users unparalleled functionality and flexibility.

The most recent release of ARCHIBUS/FM Version 16, latest in a series of nine (9) major product releases since initial launch in 1982, demonstrates our commitment to continually improve user functionality and maintain an easily customized, open architecture.

In many cases, FM information already exists in standalone legacy systems within the organization. Typically, over 42% of the data used in FM automation can come from existing databases within an organization.

Outsource bureaus can also be highly productive and cost-effective in creating or aggregating the initial comprehensive database for various facility applications.

ARCHIBUS/FM's open architecture allows for easy and cost-effective personalization for a user's unique needs. Yet, because it is such a comprehensive "commercial off-the-shelf" solution, most organizations can take advantage of cost savings by using ARCHIBUS/FM functionality "as is."

The existing off-the-shelf system, with its robust reporting capabilities, requires no additional programming by users. For example, the seven (7) application modules within the Enterprise Edition contain over 10,000 standard reports, giving users unparalleled functionality and flexibility.

If customization is needed, our business partner "SIMEK MALAYSIA" would be reviewing the existing capabilities of your Organization. ARCHIBUS, Inc. and SIMEK MALAYSIA as the partner can marshal your combined resources and experience to provide the most, cost-effective solution that meets your needs.

This argument can be used to reject any software or computer technology, yet few organizations would do without investment in evolving technologies such as personal computers, given their positive impact on productivity.

With ARCHIBUS/FM's open architecture and continual upgrades, users can expect constant improvement in functionality and ease of use.

Guarding against obsolescence within your organization is not limited to the hardware/software assets, but also entails developing procedures, standards and budgets to maintain your databases as technology changes.

While, typically, FM automation will involve linkage of some type of graphical image with an alphanumeric database, there are successful FM automation projects that do not integrate graphics with a database.

For example, the automation of building operations functions such as requesting/managing work orders, scheduling preventive maintenance or analyzing maintenance history are tasks that do not require the integration of drawings with data. ARCHIBUS/FM is an excellent tool for managing asset classes such as furniture, equipment, leases which do not necessarily require linkage to CAD-generated graphics.

Existing drawings can be cost-effectively scanned. This data can then be complemented via vectorization routines and/or digitization. Polylines are then added on an additional layer, and through entity handles and/or attributes, the polylines can be linked to an alphanumeric database. The resulting integration of data and graphics provides powerful analytic and reporting capabilities for which CAFM/CIFM systems are designed.

While, traditionally, many organizations financed their facility expenses without requiring accountability, this practice is becoming increasingly rare. As organizations re-engineer and improve their business processes, FM operations and technology must evolve to support the overall business objectives of the organization.

With ARCHIBUS/FM, space chargeback is only one feature among many that assists Facility Managers in reducing the total cost of facility and infrastructure. For example, the ability to quickly determine space occupancy by department or to plan for future growth are important applications of FM automation that benefit any organization, regardless of chargeback policies.

With nearly 20 years of CAFM/CIFM experience, ARCHIBUS, Inc. has perfected the art of implementation to eliminate the exasperation. And since time is money, most organizations implementing an ARCHIBUS/FM turnkey solution can start seeing results in less than 90 days.

Also, with ARCHIBUS/FM's intuitive graphical user interfaces and Computer-Based Training components, formal end-user training is minimized. Depending on the modules implemented, start-up training ranges from as few as 15 minutes for the FM Web Central Edition to a recommended 5 days for the most comprehensive Enterprise Edition.

ARCHIBUS/FM is used by some of the most recognized organizations in the world :



For more information or enquiries, please contact us at:



SIMEK (M) SDN. BHD.
15 - 01, Penthouse Amcorp Service
Suites, Amcorp Trade Centre,
Jalan Persiaran Barat, 46200 Petaling Jaya.
Selangor Darul Ehsan. Malaysia.
Tel : 03-7958 8071 Faks : 03-7958 8072
Email : izzaddin@simek.com.my
Website : <http://www.simek.com.my>